

**TYPE: T6.O: 225 mm Wide x 150 mm High**

**Finned Element: 2 Qty. 75mm x 75mm on 22 mm Ø pipe**

Heat out put is calculated by the following formula:

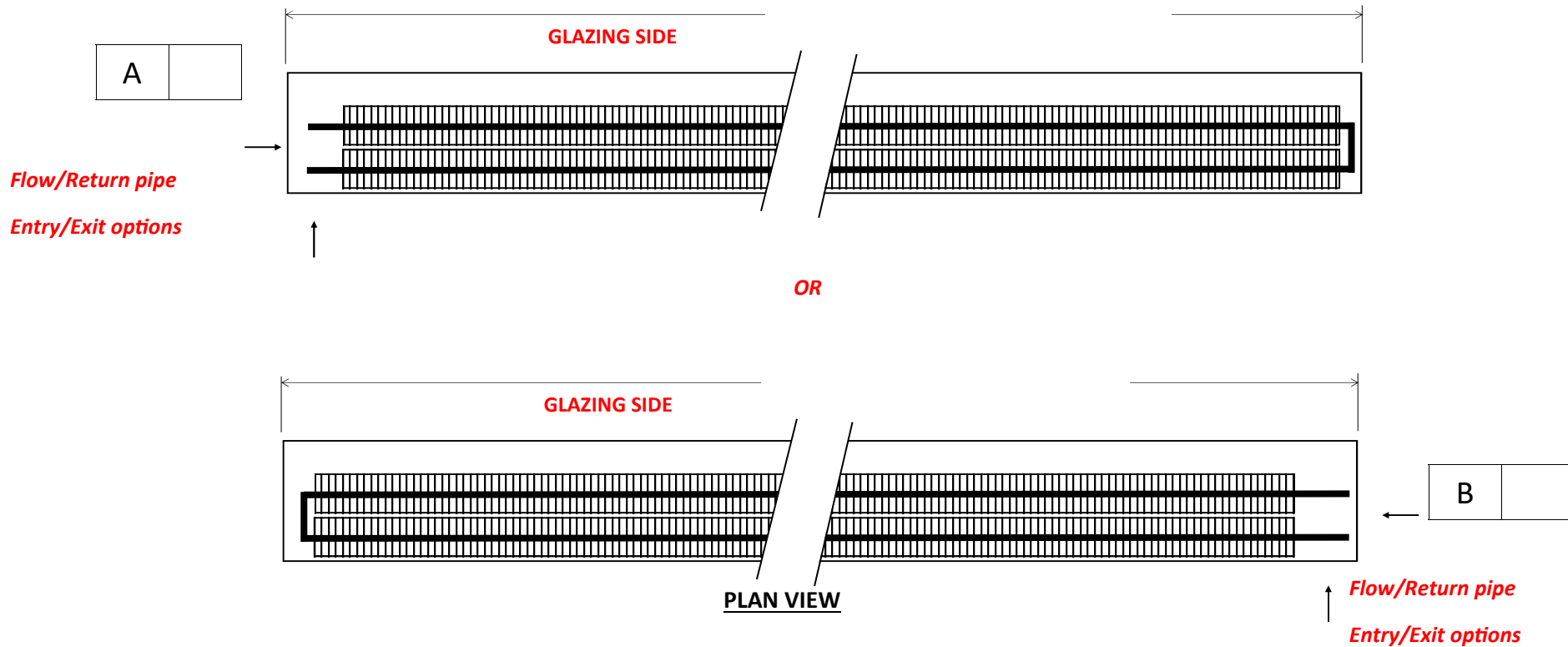
Water Flow temperature °C + Return °C ÷ 2 minus Air in temperature = Watts Output per metre of active finned element.

Example: 80°C Flow + 60°C Return temperature = 140°C ÷ 2 = 70°C less air temperature 20°C = 50°C ΔT

Watts at 30°CΔT	Watts at 40°CΔT	Watts at 50°CΔT	Watts at 60°CΔT
140	215	320	400

\* Please note our units are tested to DIN EN 16430, test data available on request.

**FINNED ELEMENT BANK LAYOUT**



**AIR VENTS ARE SUPPLIED LOOSE. ANY OTHER VALVES, CONTROLS TO BE SUPPLIED BY INSTALLER**

<b>PROJECT REFERENCE</b>	
<b>GRILLE</b>	Natural Satin Anodised Aluminium
<b>ANGLE</b>	Natural Satin Anodised Aluminium
<b>FINNED ELEMENT BANK</b>	2 Qty: 75 mm x 75 mm
<b>PIPE</b>	22 mm Ø COPPER
<b>TRENCH WIDTH x HEIGHT</b>	225 mm x 150 mm

**Delivery address:**

House No/Name:.....

Road:.....

Town/City: .....

Post Code:.....

Drawing Approval Please tick Option A or B

Signature:.....

Date:.....



Unit 3, Pulloxhill Business Park  
 Greenfield Road Pulloxhill  
 Bedfordshire, MK45 5EU  
 Phone: 0044 (0) 1525 721431  
 Fax: 0044 (0) 1525 721428  
 Email: sales@trenchheating.com