

TYPE: T14: 350 mm Wide x 300 High

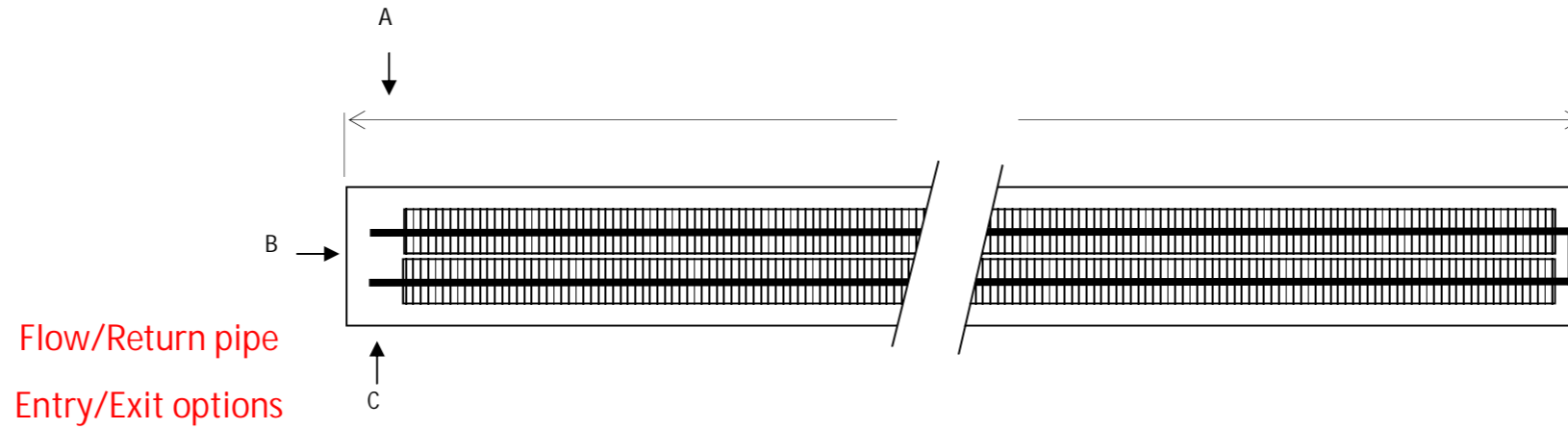
Finned Element: 4 Qty. 108 mm x 108 mm on 22 mm  $\varnothing$  pipe

UNCORRECTED Heat Output: 2193 watts/metre of active Finned Element

CORRECTED Heat Output at 82/71°C & 20°C eat: 1996 watts/metre of active Finned Element

CORRECTED Heat Output at 80/60°C & 20°C eat: 1688 watts/metre of active Finned Element

## FINNED ELEMENT BANK LAYOUT



PLAN VIEW

AIR VENTS ARE SUPPLIED LOOSE. ANY OTHER VALVES, CONTROLS TO BE SUPPLIED BY INSTALLER

PROJECT REFERENCE	
GRILLE	Natural Satin Anodised Aluminium
ANGLE	Natural Satin Anodised Aluminium
FINNED ELEMENT BANK	4 Qty: 108 mm x 108 mm
PIPE	22 mm Ø COPPER
TRENCH: WIDTH x HEIGHT	350 mm x 300 mm

<p><u>Delivery address:</u></p> <p>House No/Name:.....</p> <p>Road:.....</p> <p>Town/City: .....</p> <p>Post Code:.....</p> <p><u>Drawing Approval</u></p> <p>Signature:.....</p> <p>Date:.....</p>
---



Unit 3, Pulloxhill Business Park  
 Greenfield Road Pulloxhill  
 Bedfordshire, MK45 5EU  
 Phone: 0044 (0) 1525 721431  
 Fax: 0044 (0) 1525 721428  
 Email: sales@trenchheating.com